



CENTERPLACE CROSSING

Open concept luxury townhomes located minutes away from an abundance of amenities including shopping, restaurants, parks and more. This vibrant community in West Greeley has everything you need to live, work and play.

RESERVE NOW!

Centerplace Crossing has all you need to live life to the fullest. Each masterfully designed 3 Bedroom, 2.5 Bath Townhome is built for those who want to enjoy a space that truly feels like home. These amazing homes feature a modern design, complemented with sizeable living spaces, 9' ceilings throughout, stunning kitchens, attached oversized two car garage and more.

Reserve your home at Centerplace Crossing today!



INCLUDED FEATURES:

These stunning homes feature 9' ceilings, open concept floor plans, and high-end finishes that include quartz countertops and stainless steel appliances. Upstairs, you'll find the primary bedroom with a large walk-in closet and ensuite with oversized walk-in showers.

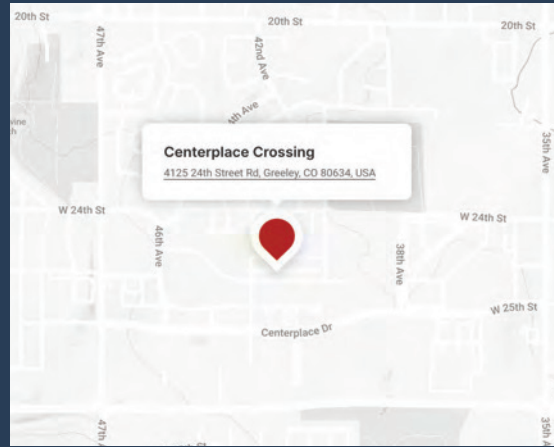
CONTACT US :

(303) 305-4527
sales@vectorhomes.us
www.vectorhomes.us

CENTERPLACE CROSSING

Where your story will unfold.

Experience the perfect combination of luxury living and affordability at Centerplace Crossing in West Greeley. This community offers plenty of opportunities for entertainment, recreation, and shopping centers just steps away. Start your journey to new home ownership with us today!



Instantly feel at home in these bright and sunny modern three-bedroom townhomes. With enough room for any family inside and out, the main living space flows effortlessly into a beautiful eat-in kitchen with a convenient extended island - the perfect place for relaxed gatherings and it doesn't stop there. Why not have your guests spill onto your private, fenced patio.

KITCHEN FEATURES:

- Quartz Countertops
- Full Height Tile Backsplash
- Whirlpool Appliances
- Counter Depth Refrigerator Included
- Undermount Stainless Steel Sink
- Delta Pull Down Kitchen Faucet

CONSTRUCTION HIGHLIGHTS:

- Maintenance Free Exterior Building Features
- Two Parking Stall Driveway
- Durable Vinyl Glazed Windows
- Tankless Instant Hot Water Heaters
- Garage Deep Enough For Standard Pickup
- Large Private Fenced Concrete Patios

BATHROOM FEATURES:

- Spacious Master Suite With Walk-in Shower
- Undermount Sinks
- Full Tile Bathrooms
- Oversized Walk-in Shower
- Main Floor Powder Room with Vanity Drawers
- Soaker Bathtub in Secondary Bathroom

COMMUNITY:

- NO METRO DISTRICT!
- \$200/Month HOA, Includes Trash & Water
- Covered Picnic Area

CONTACT US :

(303) 305-4527
sales@vectorhomes.us
www.vectorhomes.us

VECTOR
HOMES

CENTERPLACE CROSSING

42nd Avenue

PHASE 3

PHASE 2

- UNIT 7 - AA
\$389,500
- UNIT 6 - BB
\$380,900
- UNIT 5 - B
\$383,900
- UNIT 4 - A
\$388,500
- UNIT 3 - AA
\$388,500
- UNIT 2 - BB
\$379,900
- UNIT 1 - A
\$387,500

- UNIT 23 - A
\$392,500
- UNIT 24 - B
\$385,900
- UNIT 25 - BB
\$382,900
- UNIT 26 - AA
\$391,500

- UNIT 27 - A
\$389,500
- UNIT 28 - B
\$383,900

- UNIT 29 - BB
\$380,900**

- UNIT 30 - AA
\$388,500

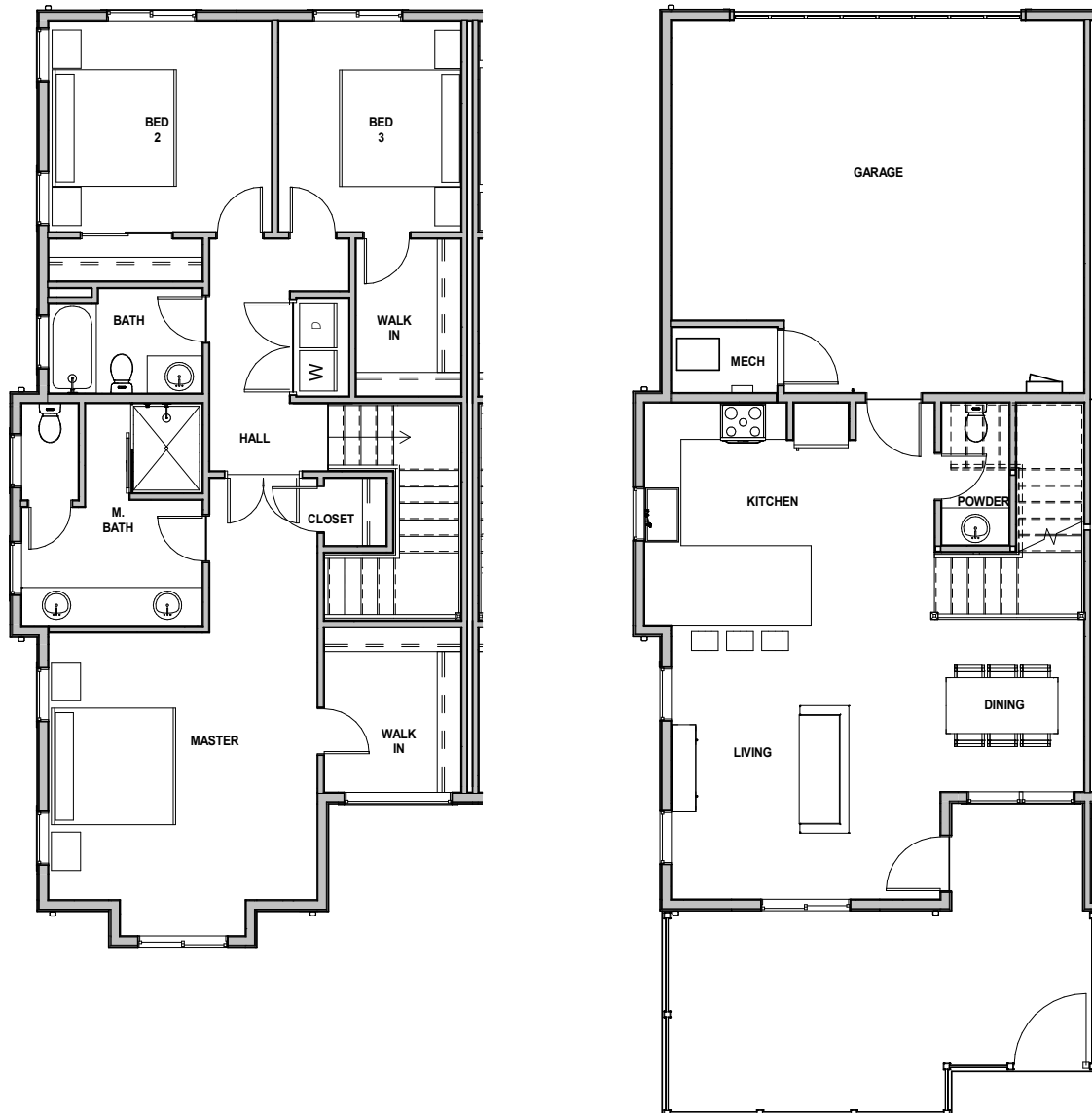
SOLD

24th Street Rd

Unit A

Centerplace Crossing

(Finished Square Footage 1,653 SF, Garage Square Footage: 456 SF)

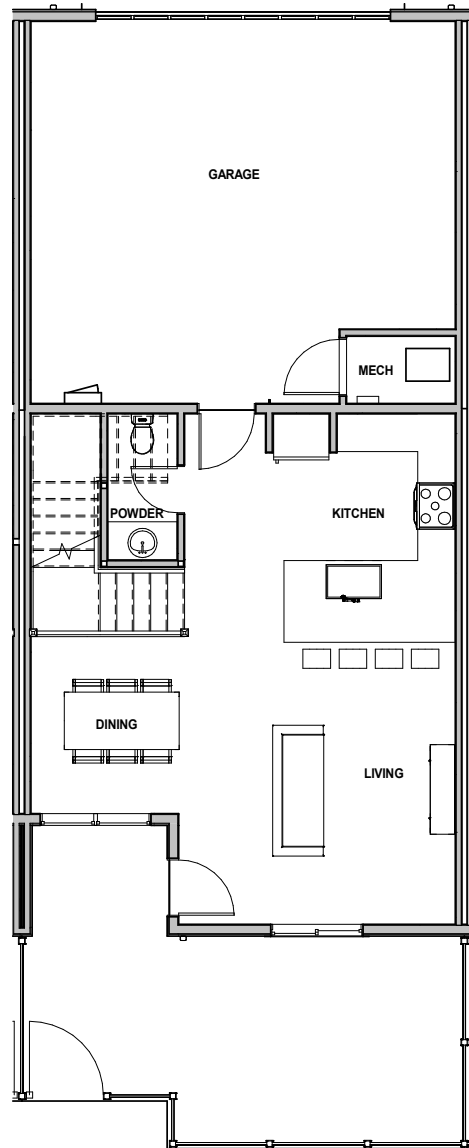
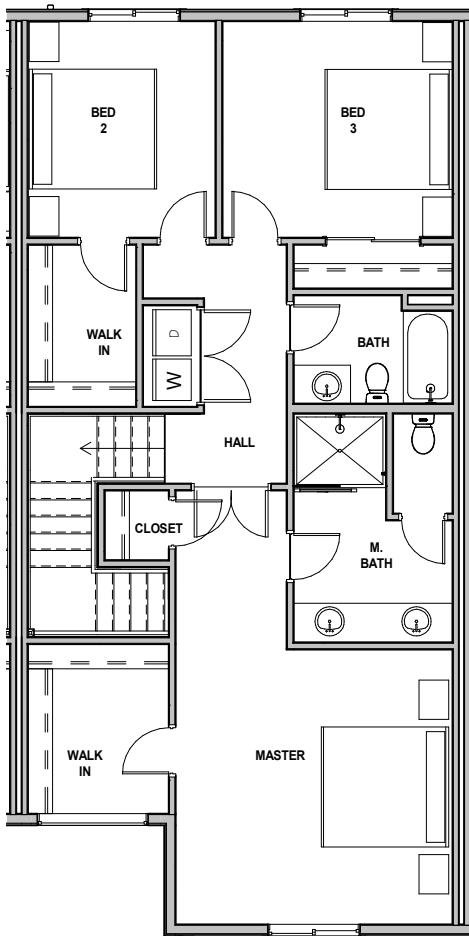


Illustrations are of typical elevations and may vary. All room dimensions are approximate.

Unit B

Centerplace Crossing

(Finished Square Footage 1,603-1,617 SF, Garage Square Footage 456 SF)



Illustrations are of typical elevations and may vary. All room dimensions are approximate.